

ATTACHMENT 1B - NOISE AND SHADOW FLICKER MODELLING

Cumulative Daytime Sound Levels (Expected Conditions)

- ≤ 50 dBA
- > 50 dBA

Cumulative Nighttime Sound Levels (Expected Conditions)

- ≤ 40 dBA
- 41 to 45 dBA
- > 45 dBA

Cumulative sound levels are predicted to comply with provincial requirements.

Cumulative Annual Shadow Flicker (Expected Conditions)

- < 5 Hours
- < 10 Hours
- < 30 Hours
- < 60 Hours
- Residence Excluded from Noise and Shadow Flicker

*Greenwood Hutterite Colony has been identified as one residence for the purposes of this map

Project Components

- Turbines
- Meteorological Towers
- Access Roads
- Collection Lines
- Project Area
- Wildlife Study Area (1 km)
- Consultation Buffer (800m)
- Notification Buffer (2 km)
- Operation and Maintenance Building
- Substation / Battery Energy Storage System
- Temporary Construction Compound

Base Elements

- Aerodrome Facility
- Municipal Roads
- Provincial Highway
- First Nation Reserves
- Town of Fort Macleod

1:60,000



MAP DRAWING INFORMATION:

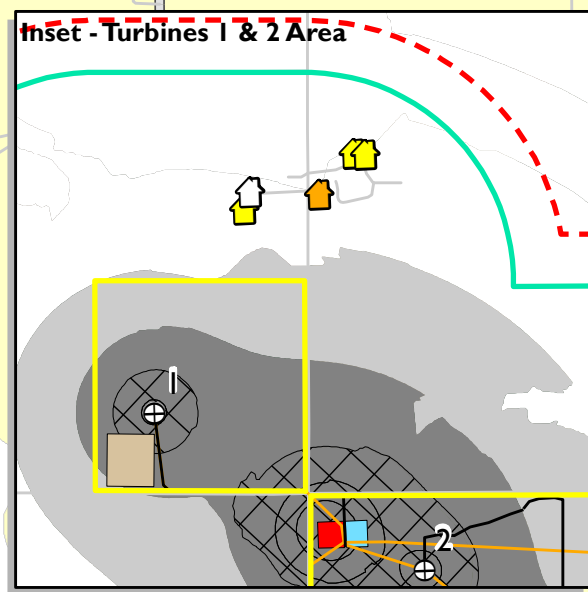
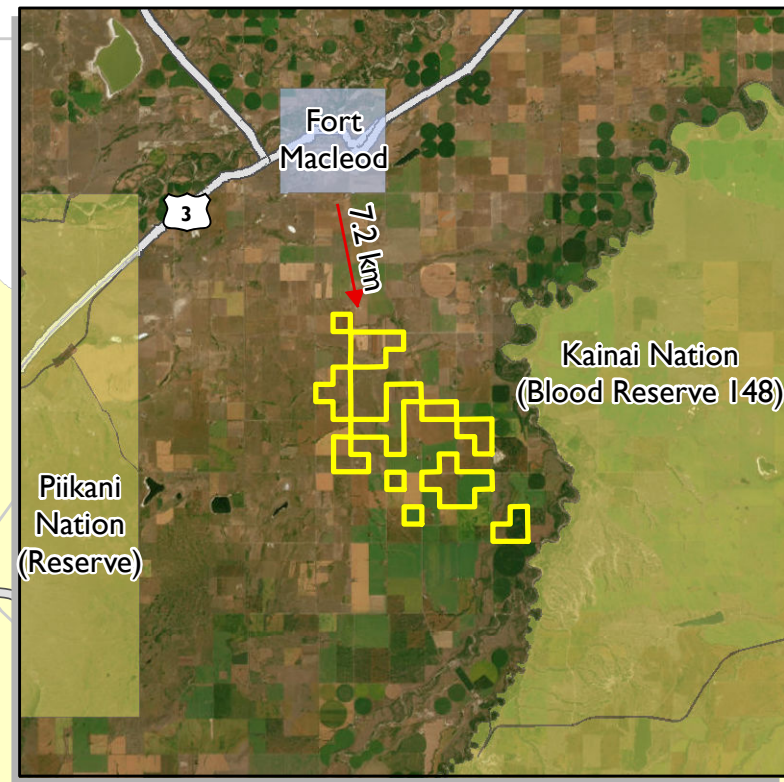
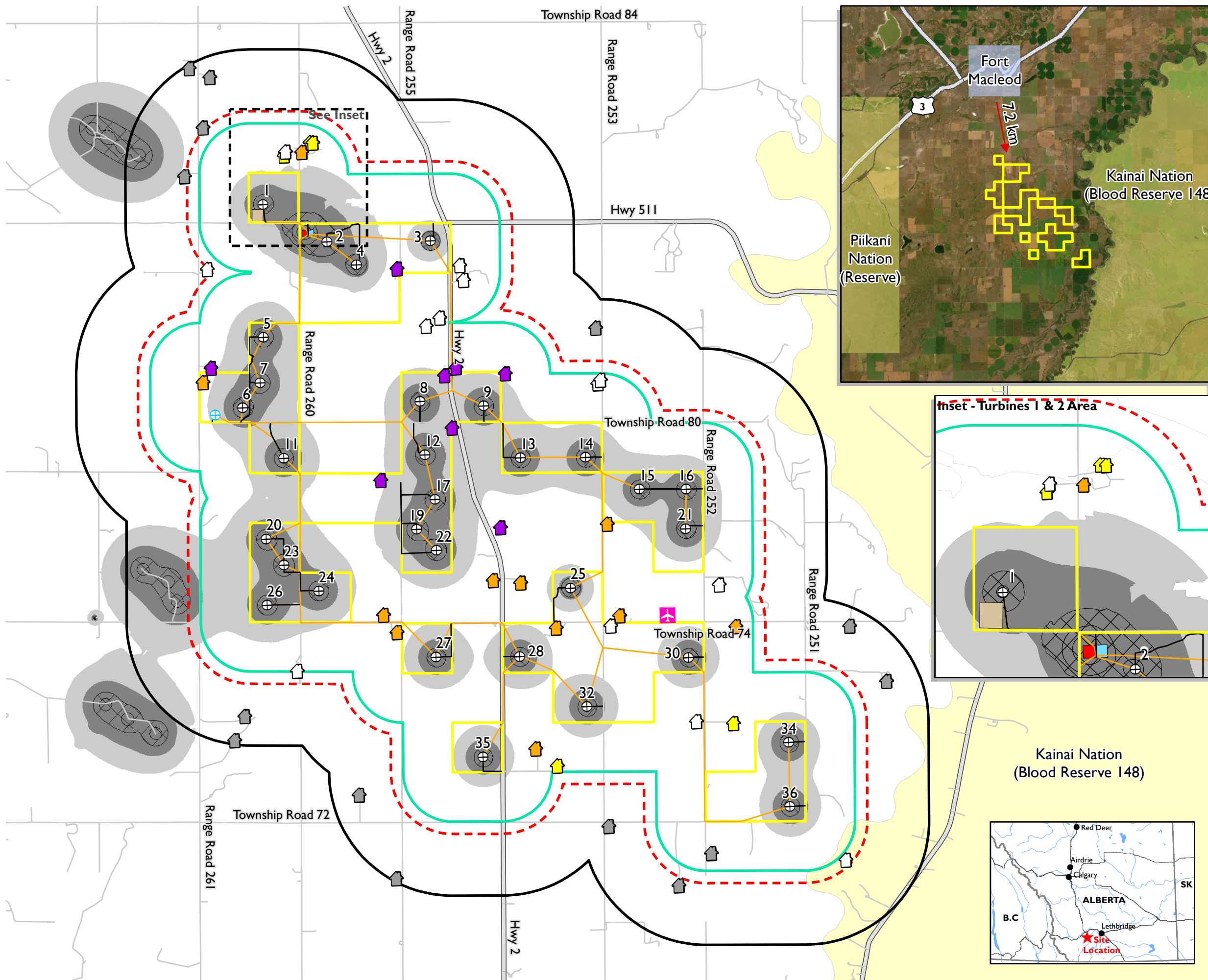
DATA PROVIDED BY:
ALTALIS, CANVEC, ESRI, GEODISCOVER ALBERTA AND DILLON CONSULTING

MAP CREATED BY 34j/c
MAP CHECKED BY BH
ROTATION: 2°

MAP PROJECTION: NAD 1983 UTM Zone 12N



PROJECT: 212787
STATUS: DRAFT
DATE: 2022-11-12



Kainai Nation
(Blood Reserve 148)

