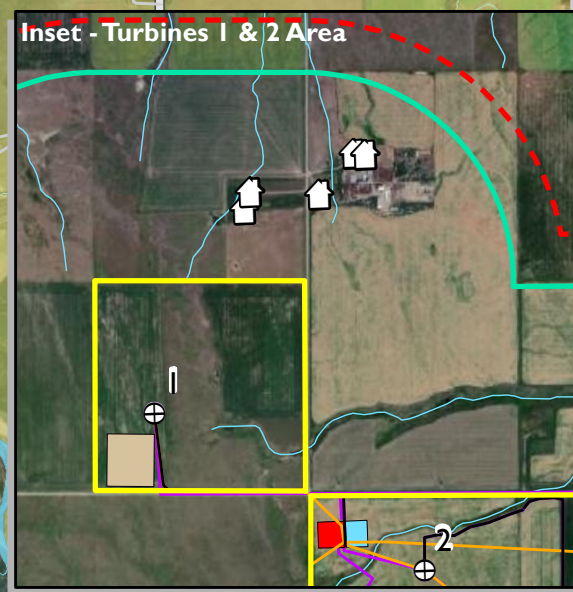
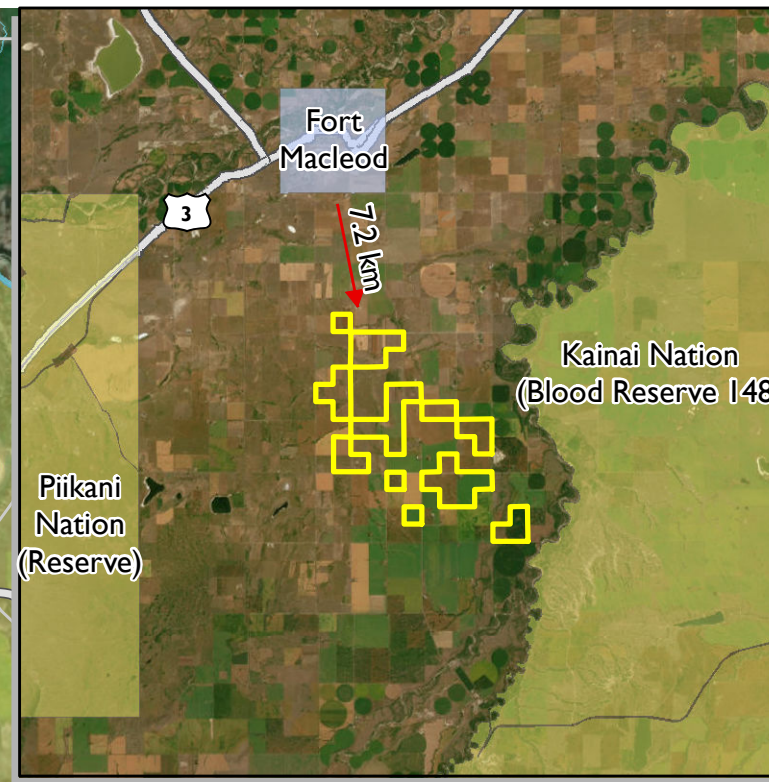
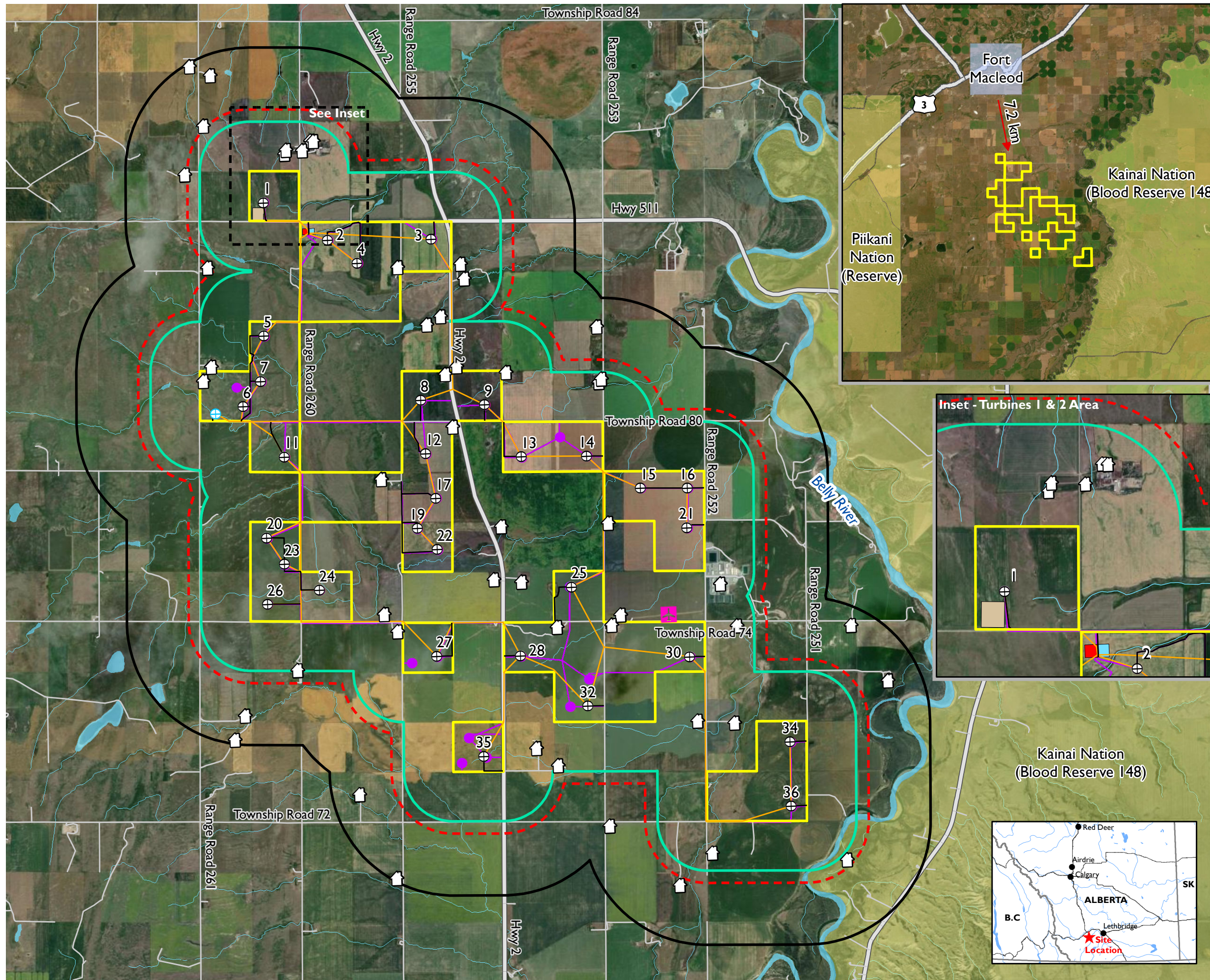


ATTACHMENT 1A - PROJECT DETAILS



- Residence
- *Greenwood Hutterite Colony has been identified as one residence for the purposes of this map
- Project Components
- Turbines
- Meteorological Towers
- Access Roads
- Collection Lines
- Project Area
- Wildlife Study Area (1 km)
- Consultation Buffer (800m)
- Notification Buffer (2 km)
- Operation and Maintenance Building
- Substation / Battery Energy Storage System
- Temporary Construction Compound
- Previous Project Components (March 4, 2022)
- Base Data
- Aerodrome Facility
- Municipal Roads
- Provincial Highway
- First Nation Reserves
- Town of Fort Macleod



MAP DRAWING INFORMATION:
 DATA PROVIDED BY:
 ALTALIS, CANVEC, ESRI, GEODISCOVER ALBERTA AND DILLON CONSULTING
 MAP CREATED BY 34j/c
 MAP CHECKED BY BH
 ROTATION: 2°
 MAP PROJECTION: NAD 1983 UTM Zone 12N



PROJECT: 212787
 STATUS: DRAFT
 DATE: 2022-11-10